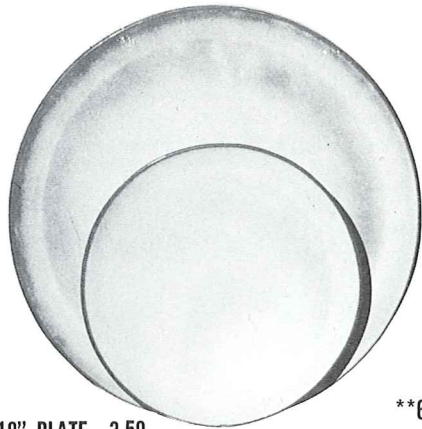


\*4K—BUTTER DISH—4.00



6F—10" PLATE—3.50

6G—7" PLATE—2.00



\*6B—SUGAR WITH LID—3.00

\*GAB—CREAM & SUGAR SET—5.00



\*6A—9 OZ. CREAMER—2.00

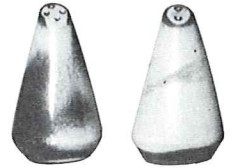


\*6V—2½ T. BAKER—8.00  
6V/W BAKER & WARMER SET—13.00



\*\*6C—CUP—2.50

6E—5" WELLED SAUCER—1.50



\*6H—SALT & PEPPER—3.00



\*5LC—6 OZ. JUICE—2.00



\*5L—12 OZ.  
TUMBLER—2.25



\*6VS—1½ QT. BAKER—6.00  
6VS/W BAKER & WARMER SET—11.00



\*81—1 QT. PITCHER—4.00



\*80—2 QT. PITCHER—6.00



\*6T—6 CUP TEAPOT—6.00



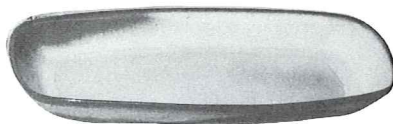
\*6J—2 CUP TEAPOT—4.00



\*6S—2 SPOUT GRAVY—4.00



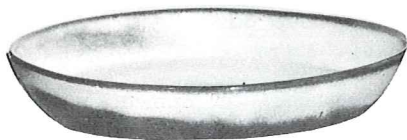
\*6U—18 OZ. BAKER FOR TWO—4.00  
A COVERED CANDY DISH



5QS—13" STEAK PLATE (SHALLOW PLATTER)—3.50

\*6P—11" STEAK PLATE—3.00

\*5PS—9" TRAY—2.50



\*91—10" BAKING DISH—3.00



\*BP—6 OZ. BEAN POT  
OR CUSTARD—1.50

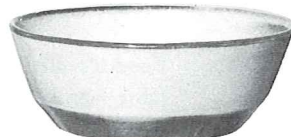


XO—3 OZ.  
SINGLE SERVING  
BOWL—1.00

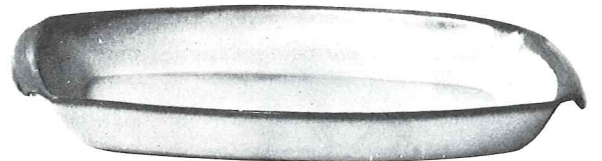


\*\*6X—14 OZ. CHILI SOUP—2.00

\*\*6XS—10 OZ. FRUIT—1.50

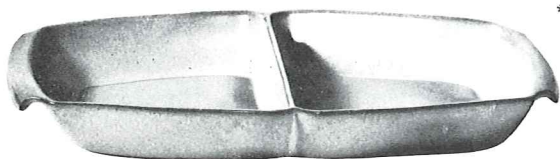


\*6N—1 QT. BOWL—3.00

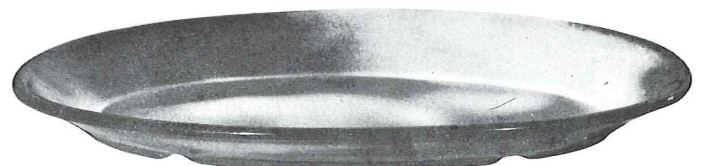


5P—17" DEEP PLATTER—12.50

\*5Q—13" DEEP PLATTER—6.00



\*5QD—13" DIVIDED BOWL—6.00



\*TP—17" OVAL PLATTER—12.50

THIS PAGE AVAILABLE IN PRAIRIE GREEN, ROBIN EGG BLUE, AUTUMN YELLOW AND WHITE SAND EXCEPT WHERE NOTED

\*AVAILABLE IN ALL COLORS

\*\*AVAILABLE IN BLACK & FLAME ALSO. — ADD 50% FOR FLAME

SIZES ARE APPROXIMATE AND MAY VARY SLIGHTLY.